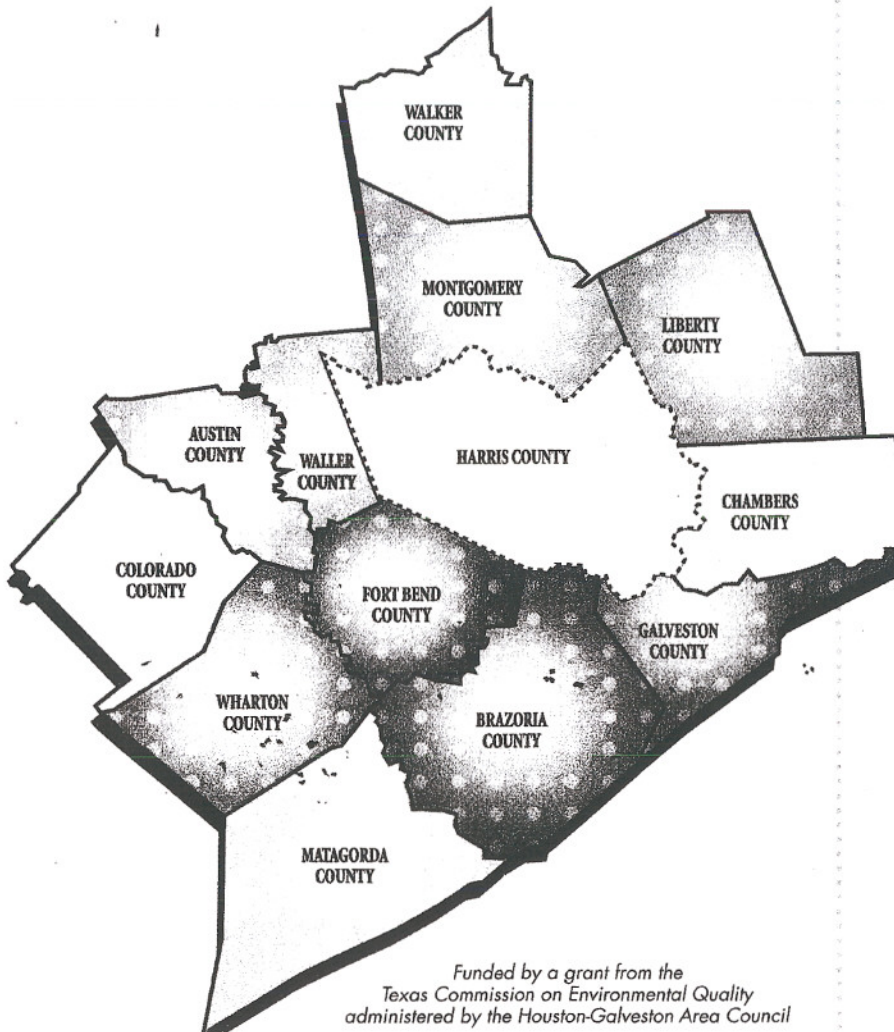


## HOUSTON-GALVESTON REGION



*Funded by a grant from the  
Texas Commission on Environmental Quality  
administered by the Houston-Galveston Area Council*

### **2007 Houston-Galveston Regional Recycling & Conservation Guide Acknowledgements**

Houston-Galveston Area Council  
Jack Steele, Executive Director  
Jeff Taebely, Community and Environmental Planning Director  
Cheryl Mergo, Solid Waste Program Manager  
Gabi De la Rosa, Public Information Planner  
Elyse Collins, EC Productions, Inc.

For more information or additional copies please email:  
[swinformation@h-gac.com](mailto:swinformation@h-gac.com)

## FOR MORE INFORMATION

**1-800-CleanUp**  
**(1-800-253-2687)**  
[www.CleanUp.org](http://www.CleanUp.org)

**Citizen's Environmental  
Coalition**  
[www.CEchouston.org](http://www.CEchouston.org)

**Construction and  
Demolition Waste**  
[www.RecycleCDdebris.com](http://www.RecycleCDdebris.com)

**Galveston Bay and  
Estuary Program**  
[www.gbep.state.tx.us](http://www.gbep.state.tx.us)

**Galveston Bay  
Foundation**  
[www.galvbay.org](http://www.galvbay.org)

**Habitat for Humanity**  
[www.HoustonHabitat.org](http://www.HoustonHabitat.org)  
(Local info)  
[www.habitat.org/local](http://www.habitat.org/local)

**Harris County  
SWIM Program**  
713-290-3000  
[www.CleanWaterClearChoice.org](http://www.CleanWaterClearChoice.org)

**Houston-Galveston  
Area Council**  
713-627-3200  
[www.h-gac.com](http://www.h-gac.com)

**Houston Service Helpline**  
3-1-1  
[www.HoustonSolidWaste.org](http://www.HoustonSolidWaste.org)

**Illegal Dumping**  
1-888-777-3186 or  
713-525-A-RAT  
(Inside the City of Houston)

**Keep Texas Beautiful**  
1-800-CLEAN-TX  
[www.ktb.org](http://www.ktb.org)

**North American Hazardous  
Materials Management  
Association (NAHMA)**  
1-877-292-1403  
[www.nahmma.org](http://www.nahmma.org)

**Recycling Alliance of Texas**  
[www.RecycleTX.com](http://www.RecycleTX.com)

**Stop Trashing Houston**  
[www.StopTrashingHouston.org](http://www.StopTrashingHouston.org)

**Texas Commission on  
Environmental Quality (TCEQ)**  
[www.tceq.state.tx.us](http://www.tceq.state.tx.us)

**Texas Recycles Day**  
[www.TexasRecyclesDay.org](http://www.TexasRecyclesDay.org)  
1-532-239-3150



# HOUSTON-GALVESTON REGIONAL RECYCLING CENTERS

## City of Houston Drop-Off Locations

- 3602 Center Street, Houston 77007  
Open Daily
- 1200 Brittmore: Open Daily
- 1245 Judiway, Houston 77018 (Glass only)  
Open Daily
- 3210 W. Lake Houston Pkwy  
(Kingwood Park & Ride) 2nd & 4th  
Weekends Each Month
- Highway 3 @ Brantley Road  
(Ellington Field) Open Daily
- Westpark Recycling Center  
5900 Westpark: Mon-Sat 8a-5p

## City of Houston (HHW only)

- 11500 S. Post Oak Road, Houston 77035
- 5614 Neches, Bldg C, Houston 77026

## City of Houston

### Neighborhood Depositories

#### Wednesday through Sunday—10a-7p

- 5100 Sunbeam, Houston 77033
- 9200 Lawndale, Houston 77012
- 5565 Kirkpatrick, Houston 77028

## Austin County

- 600 West Nichols Street, Bellville 77418
- 6607 Commerce, Wallis 77485

## Brazoria County

- 550 West Hwy 6, Alvin 77511
- 10310 FM 523, Angleton 77515
- 3210 FM 523, Oyster Creek 77541
- 3423 Harkey Road, Pearland 77581
- 800 Loggins, West Columbia 77486

## Chambers County

- 1811 Belton Lane, Anahuac 77514
- 2817 Eagle Ferry Road, Anahuac 77514
- 308 Eagle Drive, Anahuac 77514
- 7501 Highway 65, Anahuac 77514
- 806 Plummer Camp Road, Anahuac 77514
- 5121 Lawrence Road, Beach City 77520
- 10610 Eagle Drive, Mont Belvieu 77580

## Colorado County

- 1427b Montezuma St., Columbus 78934
- 801 St. Charles Street, Weittar 78962

## Fort Bend County

- 1522 Texas Parkway, Missouri City 77489
- 113 Gillingham Lane (Macco Park),  
Sugar Land 77478
- 4802 Oilfield Road, Sugar Land 77479

## Galveston County

- 702 61st Street, Galveston 77550
- 3301 Loop 197 North, Texas City 77590

## Harris County

- 1601 W. Main, Baytown 77520
- 4400 Edith Street, Bellaire 77401
- 3009 Center Street, Deer Park 77536
- 610 Old Underwood, Deer Park 77536  
(Used Oil only)
- 20634 Kenswick Dr., Jesse Jones Park,  
Humble 77338
- 2963 N. 23rd Street, La Porte 77571
- 2900 Pasadena Boulevard @ Preston,  
Pasadena 77502
- 2300 Strawberry Road @ Cherrybrook,  
Pasadena 77502
- 5002 NASA Road 1, Clear Lake Park,  
Seabrook 77586 (Paper only)
- 5004 Dincans Street, West University  
Place 77005

## Liberty County

- FM 770 South, Raywood 77582
- 187 County Road 2206, Cleveland 77328
- 27869 Hwy 146 North, Rye 77369
- 588 County Road 2010, Hardin 77564
- 7981 FM 834 East, Hull 77564
- 1034 CR 605, Dayton 77535

## Matagorda County

- 1812 Avenue H, Bay City 77414
- 700 Avenue F, Bay City 77414  
(Pallet Recycling)
- 1305 Johnson Road, Palacios 77465

## Montgomery County

- 2501 N. Frazier Street, Conroe 77303
- 31354 Industrial Lane, Magnolia 77355
- 23628 Roberts Road, New Caney 77357
- 1122 Pruitt Road, Spring 77380
- 5310 Research Forest Drive,  
The Woodlands 77387
- 200 Bell Street, Willis 77378  
(Car Batteries, Oil, Tires only)

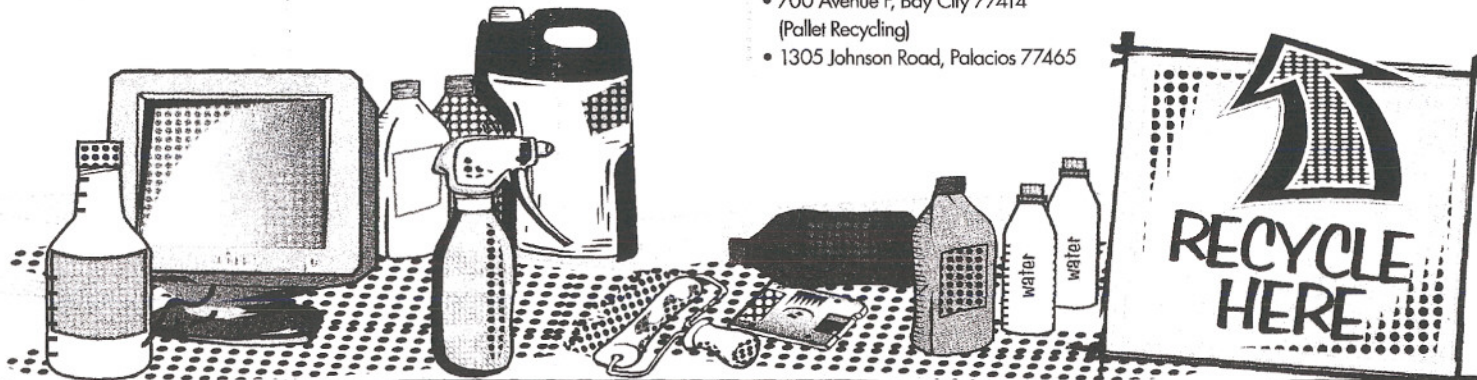
## Walker County

- 590 IH-45 North, Huntsville 77320

## Waller County - none at this time

## Wharton County

- Atlantic Street, Boling 77420
- 606 S. Dill Street, East Bernard 77435
- 635 Main Street, East Bernard 77435
- 17423 N. Foundation Loop,  
East Bernard 77435
- Calhoun Street, El Campo 77437
- 1001 W. Milam Street, Wharton 77488
- 221 S. Fulton Street, Wharton 77488
- 911 E. Boling Highway, Wharton 77488



## HOUSEHOLD HAZARDOUS WASTE (HHW)

Most of the chemicals we use in our home are considered "hazardous" and become "waste" when we throw them away. These includes products with corrosive, toxic or ignitable ingredients and require special care to dispose of them.

### HHW Examples

Paints, cleaning products, batteries, pesticides, pool chemicals, automotive supplies, including used oil, antifreeze and other products that contain potentially hazardous ingredients.

### You Can Help

- Use less toxic alternatives such as vinegar, lemon and water or baking soda.
- Use a micro fiber cloth for cleaning.  
It is made of specially engineered fibers that may be used wet or dry without chemicals and can be re-used over again.
- Read product labels to buy the least hazardous product.  
Do not "over-buy". Buy only what you need and avoid creating leftover product.

### Get Rid of HHW

The best thing to do is to use the entire product according to the label instructions. If you are not going to use all of it, find a neighbor or friend who will. Otherwise, any leftover product should be stored safely until you can drop it at a HHW drop-off center or until your community holds a HHW collection event.

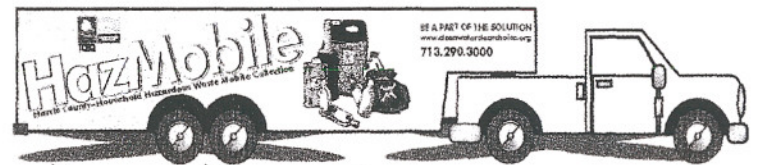
Find out more about HHW drop-off centers or events by visiting [www.CleanUp.org](http://www.CleanUp.org).

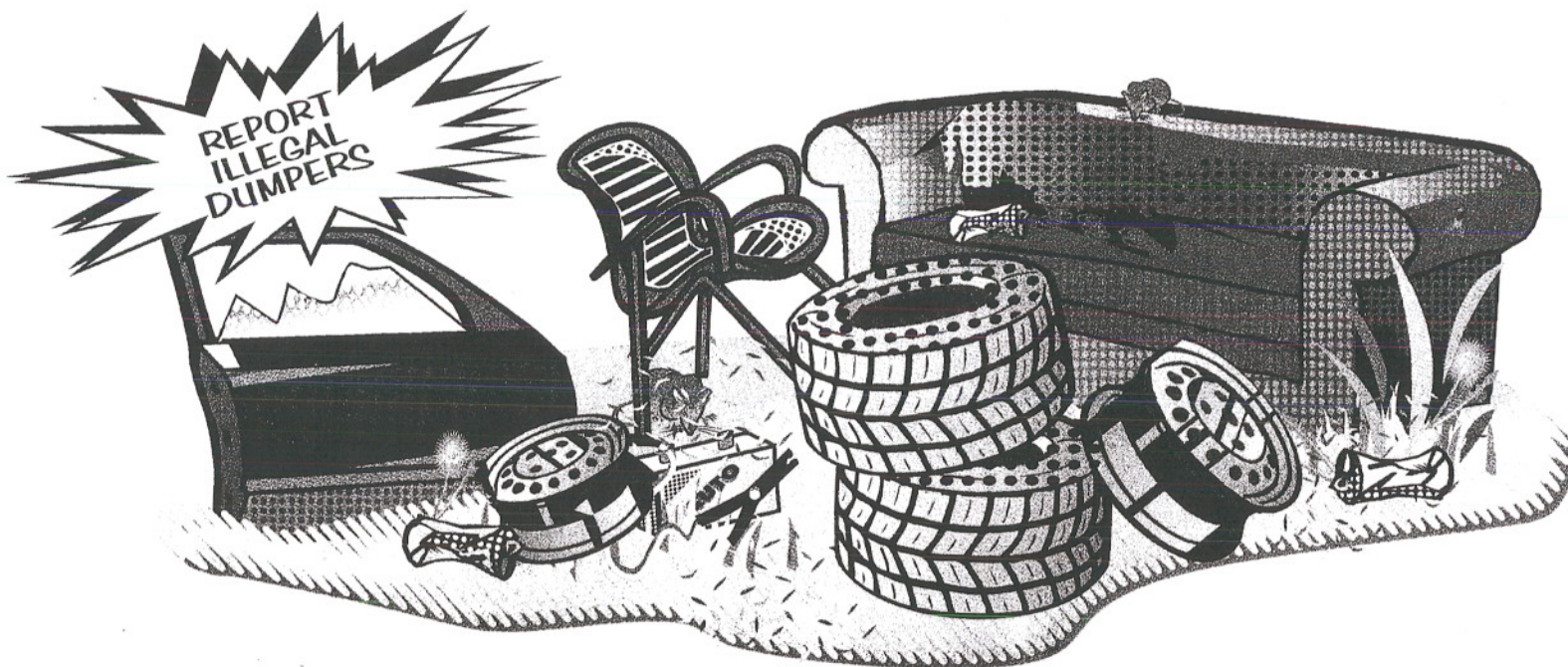


### Harris County HazMobile

The HHW Mobile Collection Unit helps residents dispose of hazardous waste. The new HazMobile will haul away items such as lawn and garden chemicals, paint products, household chemicals and automotive fluids to a HHW facility for proper disposal.

The HazMobile may be reserved for small scale community collection events, such as Harris County homeowner associations, civic clubs, churches, apartment complexes and community groups. For reservations, contact Cheryl Burton-Fentress at 713-290-3000 or [cburton@swq.hctx.net](mailto:cburton@swq.hctx.net).





## ILLEGAL DUMPING

### Dangerous, Ugly AND Illegal

Illegal dumping is exactly what the name implies: leaving trash on a property without a permit.

#### The Problem

Trash attracts rodents and flies. It contributes to environmental and health problems, as well as lowered property values.

#### The Person

People usually do it to avoid the effort it takes to properly dispose of waste materials and the disposal fees.

#### The Pieces

Construction debris, vehicle parts, furniture or household appliances, yard waste and household trash.

#### You Can Help

**Call 1-888-777-3186 (Texas residents only) to report the incident.**

If caught, the dumper can be fined and/or receive jail time.

## TIRES

### Dispose of Tires Properly

A tire for everyone in America! That is what is thrown away EVERY year.

Illegally dumped tires cause many problems.

- Tires provide a breeding ground for mosquitoes.
- Tire fires are a huge environmental problem because they burn for a long time and cause dark black smoke, which contains toxic chemicals and air pollutants.

#### You Can Help

For a small fee, most tire suppliers will dispose of your old tires when you purchase new ones. The cost per passenger car tire is usually \$1-3. If a business offers to dispose of your tires for a cheaper price, they may be taking your money and illegally dumping the tires. All haulers must pay tipping fees at the waste site, which are expensive.

#### Tires can be recycled and used in many products:

- They are shredded and used to make new roads and parking lots.
- Shredded tires can also be used in place of gravel and rock around trees and in landscaping at local parks.

## CONSTRUCTION & DEMOLITION WASTE (C&D)

### Remodeling or Building a Home?

The Houston-Galveston region is growing. We are constructing more than 36,000 new single family homes each year and remodeling older homes at an even faster rate. Business construction also continues to grow at higher than national levels.

While this is wonderful news for our economy, it does equate to an enormous amount of Construction and Demolition waste (C & D) going into area landfills.

#### You Can Help

- If you are remodeling your home, plan ahead for your C&D waste by reducing the amount you will generate.
- Reuse or salvage materials in your project. Why throw it away when someone else can use it? Save money and valuable landfill space.
- A good resource for new and gently used building materials at low cost, is your local Habitat for Humanity. Proceeds generated from the sale of building materials go towards construction of new housing.

Planning, with waste reduction in mind, is the key to a successful waste reduction effort.

For information visit [www.RecycleCDdebris.com](http://www.RecycleCDdebris.com)

## STORM DRAINS

### Keep It Out Of The Street

There is a 3-4 foot opening along the curb of many streets called the storm drain. This drain is used to divert excess rain water and prevent street flooding. The rain water flows from the drain through a storm drain system into local streams, rivers or, most likely, Galveston Bay.

#### Problem No. 1 - FLOODING

Pouring oil or chemicals down the drain, or blowing leaves or debris can clog the drain and cause street flooding.

#### Problem No. 2 - WATER POLLUTION

Storm water receives NO treatment, so if storm water is contaminated by pollutants - then it stays polluted.

#### Problem No. 3 - IT IS ILLEGAL

So, do not put anything into the storm drains:

For information visit

[www.CleanWaterClearChoice.org](http://www.CleanWaterClearChoice.org)



## ELECTRONIC WASTE (EWASTE)

### Batteries, Batteries Everywhere

Americans buy 3 billion batteries every year, which translates into 1 battery for every 2 people in the world!

Batteries are made with metals including mercury, lead, cadmium and nickel, which can be harmful to the environment when thrown away. The toxic metals inside the battery can leak into the ground and harm the water supply, or released into the air if the batteries are burned.

### You Can Help

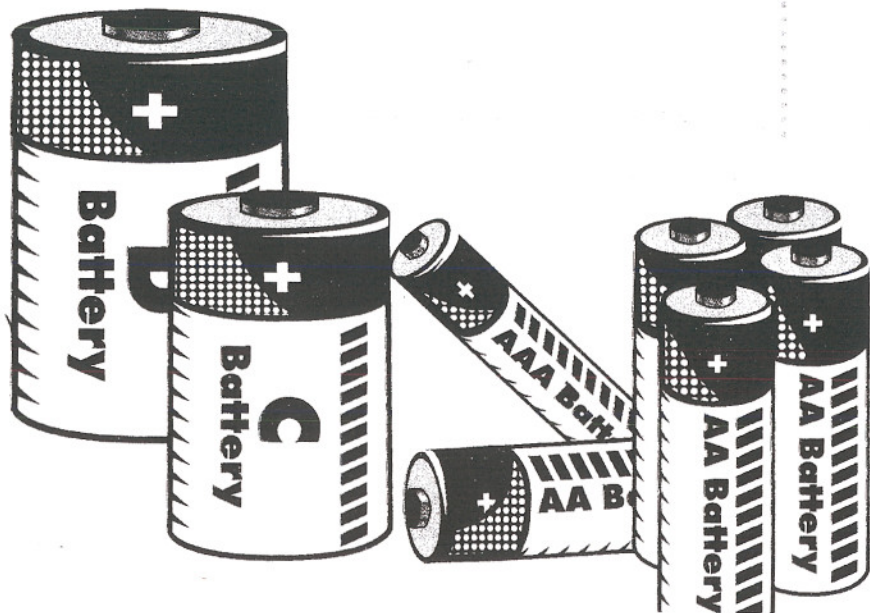
- **Buy Rechargeable Batteries**

1 rechargeable battery takes the place of hundreds of batteries.

It saves money, too.

- **Recycle Regular Batteries**

The metals and materials in batteries can be used in new items.



### Cell Phones

...Are You Listening?

Cell phones, just like batteries and other electronics, contain

toxic metals and materials, which can be harmful to the environment when thrown away. When you combine that with the fact that most people upgrade their cell phones every 2 years:

- There are over 115 million cell phones in use, just in the United States.
- 30 million used cell phones are ready to be thrown out.



- **Recycle the Phone**

Check with your cell phone provider to find out if they offer a recycling service.

- **Donate the Phone for Reuse**

There are many organizations that collect phones for refurbishment and redistribution.

**DONATE  
YOUR OLD  
CELL PHONE**



## ELECTRONIC WASTE (EWASTE)

### Computers, Monitors & TVs

500 million computers are waiting to be disposed.  
Is one in your home?

Computer equipment, just like cell phones, batteries and other electronics, contain toxic metals and materials, which can be harmful to the environment when thrown away.

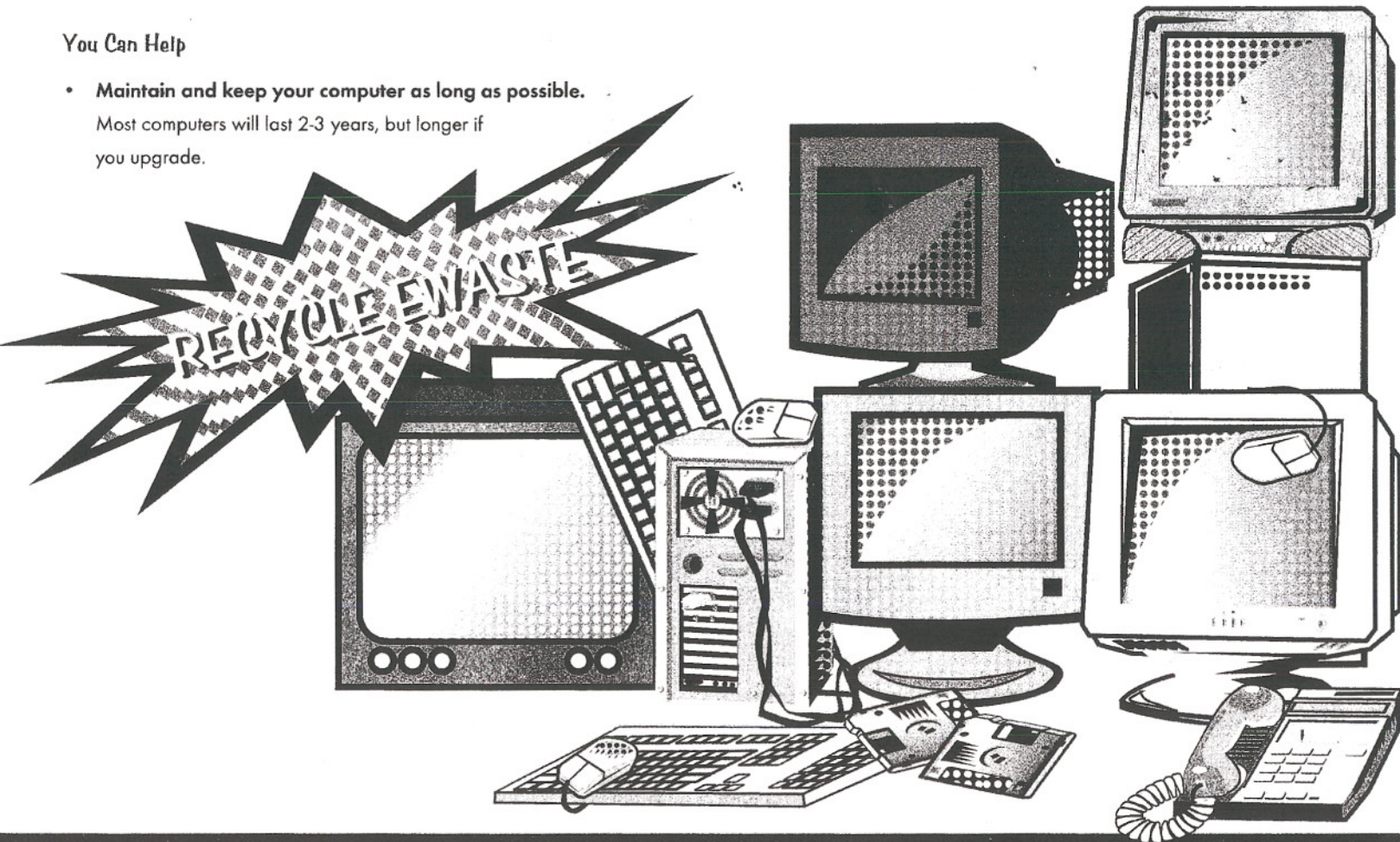
One of the largest sources of landfill lead is from monitors.  
Each monitor can contain 4-8 pounds of lead!

### You Can Help

- **Maintain and keep your computer as long as possible.**  
Most computers will last 2-3 years, but longer if you upgrade.

- **Keep your monitor as long as possible.**  
Most monitors will last 6 - 7 years or longer.
- **Recycle your computer.**  
Many materials, found in computers, including glass, metals and plastic can be used in other products.

You can ship your computer directly to a recycler. Many computer stores have trade-in programs and will ship it for you.



## PAINT SMART AND SAFE

Each year, 2 gallons of paint are sold, per person in the U.S. Much of that paint ends up in landfills.

Paint contains chemicals that can damage soil and water if dumped on the ground or thrown in trash. Paint should NEVER be poured down the drain because paint chemicals can pass through the sewage treatment plant and harm the environment.

### You Can Help

#### Use Paint

- **Buy Water-Based Latex**  
*It's easy to clean and once it dries, you can throw it out.*
- **Buy Only What You Need**  
*One gallon will cover 300 - 400 square feet.*
- **Use Up All Paint**  
*Use extra paint for touch-up jobs and small projects.*

#### Store Paint

- **Store Paint Correctly and it will Last for Years**  
*Store your paint can upside down! Yes - that's right. The paint will create a tight seal around the lid, keeping the paint fresh until you need it again.*

#### Dry Paint

- **Dry Out Leftover Latex Paint and Toss the Can**  
*Dry out latex paint (one inch or less) by opening the can and letting the liquid evaporate.*
- **Give Away or Donate Extra Paint**  
*If you can't use your leftover paint, donate it to community groups or take it to your community recycling facility.*

